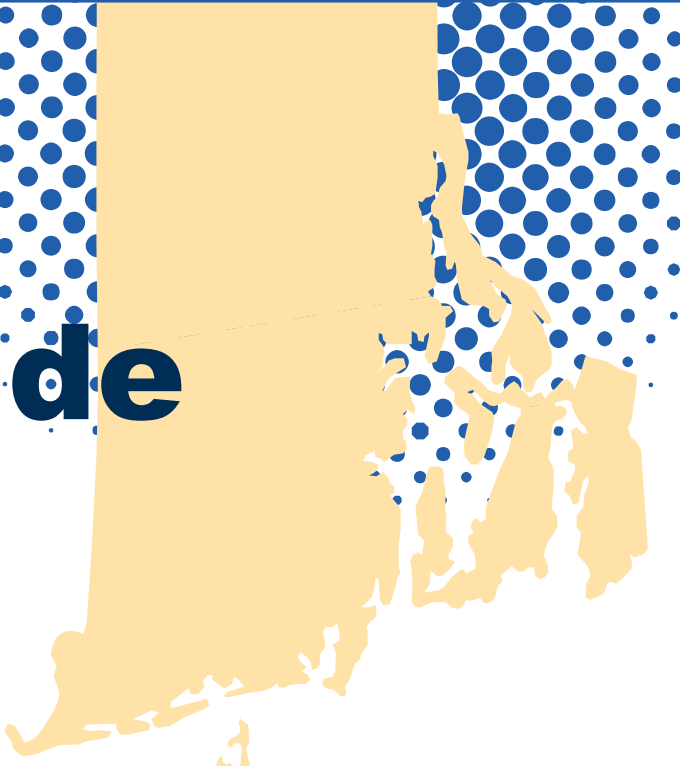




Run for Office Guide 2026



Rhode Island guide for candidates

Party Primaries
September 9, 2026

General Election
November 3, 2026

401-222-2340
elections@sos.ri.gov
vote.ri.gov

@RISecState
Like us on Facebook
RISecState

Follow us on Instagram
RISecState
Follow us on Bluesky
RISecState

 **Gregg M. Amore**
Secretary of State

This guide was produced by the
Rhode Island Department of State



Dear Potential Candidate,

Thank you for your interest in serving the public as an elected official.

Before becoming Secretary of State, I was a civics and history teacher. In my role now, I've been able to continue visiting classrooms across our state. When I speak to students, I emphasize the importance of participating in our democracy – whether as a voter, candidate, or elected official. By taking this step, you are doing just that.

This digital guide contains all of the information you will need to run for office in the September primary and November general election, including filing deadlines and contact information for your local election officials.

We are happy to provide a hard copy of the guide upon request. If you need additional information, please contact our Elections Division at 401-222-2340, TTY 711, or elections@sos.ri.gov.

Sincerely,

A handwritten signature in black ink that reads "Gregg M. Amore".

Gregg M. Amore
Secretary of State

Table of Contents

Important Candidate Deadlines	4
Eligibility to Run for Office	5
Disaffiliation	6
Filing a Declaration of Candidacy	7-8
Endorsements	9
Nomination Papers.....	10-13
Withdrawal of Candidacy	14
Ballot Placement - Primary Election	15-16
Ballot Placement - General Election	16
Election Day Activities	17
Campaign Finance Information	
Campaign Finance	18
2026 Campaign Finance Calendar	19-21
Ethics Commission Filing	22
Contact Information	
Local Boards of Canvassers.....	23
State Elections and Political Party Offices	24
United States Postal Service (USPS)	24
Additional Information	
RI Department of State Resources.....	24

NOTE: The determinations herein are a matter of interpretation and are intended solely as a guide. They do not constitute official interpretation of State law. All statutory references are to [Title 17](#) of the Rhode Island General Laws, 1956, as amended as of the 2025 legislative session.

Important Candidate Deadlines



March 24, 25, and 26	Deadline for candidates to disaffiliate from their political party to run as a candidate from another party. Deadline depends on the date a candidate files Declaration of Candidacy.
May 23, 24, and 25	Deadline for candidates to register to vote in order to be able to run for office. Deadline depends on the date a candidate files Declaration of Candidacy.
June 22, 23, and 24	Period for candidates to file Declaration of Candidacy. Must be received no later than 4 p.m. on June 24 .
June 25	Deadline for endorsements to be filed for state (General Assembly) and local candidates.
June 26	Deadline for endorsements to be filed for federal and statewide candidates.
June 30	Date all candidates may pick up their nomination papers.
July 10	Deadline all candidates must submit nomination papers to local boards of canvassers.
July 13	Deadline for candidates for local office to file withdrawals of candidacy.
July 17	Ballot placement lottery for primary and general election.
July 17	Deadline for candidates for federal or state office to file withdrawals of candidacy.
September 9	PARTY PRIMARIES
November 3	GENERAL ELECTION



Deadline to register to vote in order to run for office is **no later than May 25.**

Eligibility to Run for Office

To file a Declaration of Candidacy, you must be a registered voter in Rhode Island and live within the district for the office you seek*. See chart below for other requirements.

Office	Age	State Residence	U.S. Citizen	Years in Term	# of Terms
U.S. Senator	30	yes	9 years	6	no limit
U.S. Representative*	25	yes	7 years	2	no limit
General Offices: Governor Lt. Governor Secretary of State Attorney General General Treasurer	18	30 days	yes	4	2
State Senator	18	30 days	yes	2	no limit
State Representative	18	30 days	yes	2	no limit
Local Offices	18	30 days in district	yes	Check with local Board of Canvassers	

* Candidates for U.S. Representative must live in Rhode Island, not necessarily the district in which they are running.

Party Eligibility

Affiliated candidates:

If you plan on running as a party candidate, you must be a member of that particular party (Democrat or Republican) or unaffiliated at the time of filing your Declaration of Candidacy.

Independent/unaffiliated candidates:

You are eligible to file a Declaration of Candidacy as an independent (also known as unaffiliated) candidate if, at the time of filing the Declaration of Candidacy, you are qualified to vote in the election within the district for the office which you seek.

The following chart may help you understand your options:

If you are registered as a:	You are eligible to run as a:		
	Democrat	Republican	Independent
Democrat	Yes	No**	Yes
Republican	No**	Yes	Yes
Independent	Yes	Yes	Yes

** If you belong to one party and want to run as a candidate for another party, you must change your party at least 90 days prior to the date you will file your Declaration of Candidacy. **You must file a disaffiliation no later than March 26.**



Deadline to file a disaffiliation is **March 26.**

Disaffiliation

What is disaffiliation?

When you no longer wish to be a member of a particular political party, you must sign a form to “disaffiliate” from that party. Forms are available at the local boards of canvassers. You can also disaffiliate at vote.ri.gov.

Do I have to disaffiliate?

If you want to run as a candidate for a party other than the one to which you are registered, the following chart may help you understand your filing options:

If you are registered as a:	Are you required to disaffiliate if you wish to run as a:		
	Democrat	Republican	Independent
Democrat	No	Yes	No
Republican	Yes	No	No
Independent	No*	No*	No

*** By declaring to be a candidate in a primary you will then become a member of that party.**

When is the deadline to disaffiliate?

If you file your Declaration of Candidacy on:	You must file your disaffiliation, if necessary, no later than:
June 22	March 24
June 23	March 25
June 24	March 26

Where can I disaffiliate?

You must disaffiliate with the local Board of Canvassers in the city or town where you are registered to vote.

You can disaffiliate at vote.ri.gov or you can file your disaffiliation by completing a new voter registration form, keeping in mind that a mailed registration form must be received by the above deadlines.



You must disaffiliate at least 90 days before you file your Declaration of Candidacy.



Your Declaration of Candidacy must be filed on **June 22, 23, or 24**. Must be received no later than **4 p.m. on June 24**.

Filing a Declaration of Candidacy

Declaration of Candidacy:

The Declaration of Candidacy is the document you sign to start the process of becoming a candidate. You “declare” yourself as a candidate for a particular office, and if you wish to run as a party candidate, you also “declare” yourself to be a member of that party.

Do I need to file a Declaration of Candidacy to run for office?

Yes. All candidates for all public and party offices must file a Declaration of Candidacy.

Where do I get a Declaration of Candidacy form?

The Declaration of Candidacy form is available on our website at vote.ri.gov.

The Declaration of Candidacy form is also available at:

- › Department of State Elections Division at 148 W. River St., Providence, RI.
- › Local Board of Canvassers in each city and town. See addresses **on page 23**.

How do I file my Declaration of Candidacy form?

Complete the form online and print it out. You must then sign it and deliver or mail the form. The form must be received no later than **4 p.m. on June 24**.



Declarations of Candidacy must contain original signatures. Your completed form cannot be faxed or emailed.

Where do I file my Declaration of Candidacy form?

Candidates for:	File your Declaration of Candidacy at:
Federal Public Office Senator in Congress Representative in Congress Statewide Public Office Governor, Lt. Governor, Secretary of State, Attorney General, General Treasurer	Department of State Elections Division, 148 W. River St., Providence, RI 02904
State Public Office Senator in General Assembly Representative in General Assembly	Local Board of Canvassers in the city or town where you are registered to vote.
Local Public Office* Mayor/Town Administrator City/Town Council School Committee	Local Board of Canvassers in the city or town where you are registered to vote.
State Party Committee Office Senatorial District Committee Representative District Committee Democratic State Committee	Local Board of Canvassers in the city or town where you are registered to vote.
Local Party Committee Office City/Town/Ward Committee	Local Board of Canvassers in the city or town where you are registered to vote.

* Contact your local Board of Canvassers for a full listing of local public offices in your city/town.

Public Offices
<p>Federal Public Office Senator in Congress Representative in Congress</p> <p>Statewide Public Office Governor, Lt. Governor, Secretary of State, Attorney General, General Treasurer</p>
<p>State Public Office Senator in General Assembly Representative in General Assembly</p>
<p>Local Public Office Mayor/Town Administrator City/Town Council School Committee</p>

Party Committee Offices
<p>State Party Committee Office Senatorial District Committee Representative District Committee Democratic State Committee</p>
<p>Local Party Committee Office City/Town/Ward Committee</p>

Can I file a Declaration of Candidacy form for more than one office?

If you are filing a Declaration of Candidacy form for:

Public Office

You can only file a Declaration of Candidacy for one public office.

If you are filing a Declaration of Candidacy form for:

Public Office and Party Committee Office

You can file a Declaration of Candidacy for one public office and multiple party committee offices.

You must file a separate Declaration of Candidacy for every office you seek.

Example 1: You may file a Declaration of Candidacy for Representative in General Assembly (Public Office) and another Declaration of Candidacy for Representative District Committee (Party Committee Office).

Example 2: You may file a Declaration of Candidacy for Senatorial District Committee (Party Committee Office) and file a Declaration of Candidacy for Town Committee (Party Committee Office).

You may NOT file for the same office under different party labels.

Example: You may NOT file a Declaration of Candidacy for Senator in General Assembly as a Democrat and file a Declaration of Candidacy for Senator in General Assembly as an independent/unaffiliated candidate.



If a voter files a Declaration of Candidacy for more than one federal, statewide, state, or local public office during the declaration period, the last declaration filed shall negate any previous filings.

Endorsements

What is an endorsement?

This is the process whereby party officials designate their preferred candidate(s) representing their party in a primary, and, if there is no primary, in the general election.

Who makes the endorsements and where are they filed?

It depends on the office for which you are running. The following chart should help:

For the office of:	Endorsement by:	Endorsements are filed at:	Required signatures	Deadline to be filed
Senator in Congress Representative in Congress	State Committee	Department of State Elections Division	See RIGL §17-12-4	Not later than June 26
Governor, Lt. Governor, Secretary of State, Attorney General, General Treasurer	State Committee	Department of State Elections Division	See RIGL §17-12-4	Not later than June 26
Senator in General Assembly*	Senatorial District Committee	Local Board of Canvassers where endorsed candidate resides	A majority of the members on the committee	Not later than June 25
Senatorial District Committee*	Senatorial District Committee	Local Board of Canvassers where endorsed Senate candidate resides	A majority of the members on the committee	Not later than June 25
Representative in General Assembly*	Representative District Committee	Local Board of Canvassers where endorsed candidate resides	A majority of the members on the committee	Not later than June 25
Representative District Committee*	Representative District Committee	Local Board of Canvassers where endorsed Representative candidate resides	A majority of the members on the committee	Not later than June 25
Democratic State Committee*	Representative District Committee	Local Board of Canvassers where endorsed Representative candidate resides	A majority of the members on the committee	Not later than June 25
Local Offices, City/Town/Ward Committee	City/Town/Ward Committee	Local Board of Canvassers	Three officers of the committee	Not later than June 25



*** For Providence Candidates only:** Endorsements of candidates for Senator in General Assembly, Representative in General Assembly, Democratic State Committee, and senatorial or representative district committee in the city of Providence must be filed at the Department of State Elections Division, 148 W. River St., Providence, RI.

* Anyone other than candidates picking up nomination papers from the Department of State Elections Division must have written authorization from the candidate.

Nomination Papers

What are nomination papers?

Nomination papers are the forms on which you will obtain valid signatures - that is, signatures of registered voters who are eligible to vote for the office that you are seeking. In order to be on the ballot, you will need to obtain a specified number of valid signatures on your nomination papers.

Nomination Papers Requirements and Deadlines

- Nomination papers available to pick up starting: **June 30**
- Deadline to return nomination papers: **July 10 at 4 p.m.**
- Must be returned to the local Board of Canvassers in the city or town listed at the top of the nomination paper.

Candidates running for:	Number of valid signatures required	Endorsed candidates	Unendorsed candidates	Where to pick up nomination papers
Federal Public Office Senator in Congress Representative in Congress	1000 500			You must obtain your nomination papers from the Department of State Elections Division 148 W. River St. Providence, RI.
Statewide Public Office Governor Lt. Governor Secretary of State Attorney General General Treasurer	1000 500 500 500 500	Need nomination papers	Need nomination papers	
State Public Office Senator in General Assembly Representative in General Assembly	100 50	Need nomination papers	Need nomination papers	You must obtain your nomination papers from the local Board of Canvassers where you filed your Declaration of Candidacy, except for Providence.** ** Providence candidates must obtain nomination papers from the Department of State Elections Division 148 W. River St. Providence, RI.
Local Public Office Mayor/Town Administrator City/Town Council School Committee	Check with your local Board of Canvassers.	Need nomination papers	Need nomination papers	
State Party Committee Senatorial District Committee Representative District Committee Democratic State Committee	50 50 50	Do not need nomination papers	Need nomination papers	
Local Party Committee Office City/Town/Ward Committee	Check with your local Board of Canvassers.	Do not need nomination papers	Need nomination papers	



Signers on a nomination paper must be from the city or town listed at the top of the nomination paper.

Who can sign my nomination papers?

Any registered voter who is eligible to vote for the office for which you seek election.

Example: A voter who is registered in Congressional District 1 can sign your nomination papers if you are running for the office of Representative in Congress in District 1.

Does the signer have to be a member of the same political party listed on the nomination paper?

The voter DOES NOT need to be a member of the political party listed on the nomination paper.

Example: A registered Democrat can sign the nomination papers of a Democratic candidate, a Republican candidate, and an independent/unaffiliated candidate.

Does it make a difference which of my nomination papers a voter signs?

Yes. At the top of each nomination paper there is a space for you to indicate the city/town in which the signers are registered voters.

Example: A registered voter in Providence must sign a nomination paper that lists "Providence" at the top of the nomination paper. This is the nomination paper that you will return to the Providence Board of Canvassers. The Providence Board of Canvassers will certify signatures on this nomination paper. If a Cranston voter signs a Providence nomination paper, that signature will not be certified since the nomination paper will be reviewed only by the Providence Board of Canvassers.

If a voter signs a nomination paper of a party candidate, does that automatically make the voter a member of that party?

No. The act of signing nomination papers does not make the voter a member of that political party.

How many papers can an eligible voter sign for the same candidate?

Voters may sign nomination papers for as many federal, statewide, state, local, and party candidates as they would like. However, a voter's signature can only be counted once for each candidate.


Can I make copies of blank nomination papers if I need more than are provided by the Department of State Elections Division or my local Board of Canvassers?

Yes, candidates may make copies of blank nomination papers at their own expense so long as the duplicates are identical in appearance to the originals provided by the Department of State Elections Division or your local Board of Canvassers.

How do I know if I qualified for ballot placement?

Candidates for federal, statewide, state, local, and party office can check our website at vote.ri.gov. As certified nomination papers are received from the local boards of canvassers, we will enter the number of valid signatures for each candidate into our database. This information will be updated in real time during the nomination paper certification process (**June 30 through July 16**) with the final posting available on July 17 after the ballot placement lottery.

Understanding Nomination Papers



State of Rhode Island
NOMINATION PAPER
Statewide Offices

Form #

Total # of Validated Signatures

9602

DUE TO THE LOCAL BOARD OF CANVASSERS BY **Date and Time**

The undersigned, qualified electors in the City or Town of in the State of Rhode Island, in accordance with the provisions of Title 17 of the General Laws of 1956, as amended, make the following nominations to be voted for at the **Type of Election** be held on **Date of Election**

TITLE OF OFFICE	DISTRICT #	NAME OF CANDIDATE	RESIDENCE (NUMBER & STREET)
GOVERNOR	Statewide		

Each of the signers of this paper by so signing their name (as it appears on the voting list) severally certifies that they are a voter in the area from and for which the above-named candidate(s) seek to be elected.

Print Voter's Name	Voter's Residence (Number & Street)	Voter's Signature	V*
1.			
2.			
3.			
4.			
5.			
6.			
7.			
8.			
9.			
10.			
11.			
12.			
13.			
14.			
15.			
16.			
17.			
18.			
19.			
20.			
21.			
22.			
23.			
24.			
25.			
26.			
27.			
28.			
29.			
30.			
31.			
32.			

***FOR OFFICIAL USE ONLY**

- Form Number**
For internal use only.
The unique number generated by the Central Voter Registration System (CVRS) for each individual nomination paper. It is for tracking and review purposes.
- Number of Validated Signatures**
For internal use only.
Completed by the Board of Canvassers for that city/town and indicates total number of accepted signatures on the nomination paper.
- City or Town of**
This is the city/town where the undersigned are registered to vote.
 - › Only signatures from voters in that city/town will be accepted on this form.
 - › The form must be returned to the Board of Canvassers for that city/town.
- Candidate Information**
This contains the name and address of the candidate and the office for which they are running.
- Voter Information**
Voters will print their name and address, then sign on the corresponding row.
- V***
For internal use only.
Each signature is reviewed by the Board of Canvassers and accepted or rejected. If the signature is rejected, the Board will write a code with the reason for rejection.

A = Accepted
B = Blank line
D = Duplicate
NE = Not eligible

N = Not registered/found
S = Signature does not match
WD = Wrong District

NOMINATION PAPER CERTIFICATIONS		
<p>AFFIDAVIT OF SIGNATURES OBTAINED</p> <p>I, _____, of _____ the City/Town of _____, under oath, make affidavit and say that the signers of the within nomination paper did so sign the paper in my presence.</p> <p>Signature of Collector _____</p> <p>Residence Address _____</p> <p>City/Town and State _____</p> <p>Telephone Number _____</p> <p style="text-align: center; font-size: small;">Received Date Stamp for City/Town</p>	<p>NOTARY PUBLIC</p> <p>State of Rhode Island County of _____ Subscribed and sworn to before me on this _____ day of _____, 20____.</p> <p>Signature of Notary Public _____</p> <p>Printed Name of Notary Public _____</p> <p>Notary Public ID Number _____</p> <p>Date Commission Expires _____</p> <p style="text-align: center; font-size: small;">Notary Public Ink Stamp Only</p>	<p>BOARD OF CANVASSERS CERTIFICATION</p> <p>The undersigned certify that _____ of the within signatures are names of qualified electors in the City/Town of _____.</p> <p>Board of Canvassers' Signature _____</p> <p>Board of Canvassers' Signature _____</p> <p>Board of Canvassers' Signature _____</p> <p style="text-align: center; font-size: small;">Received Date Stamp for RI DOS</p>

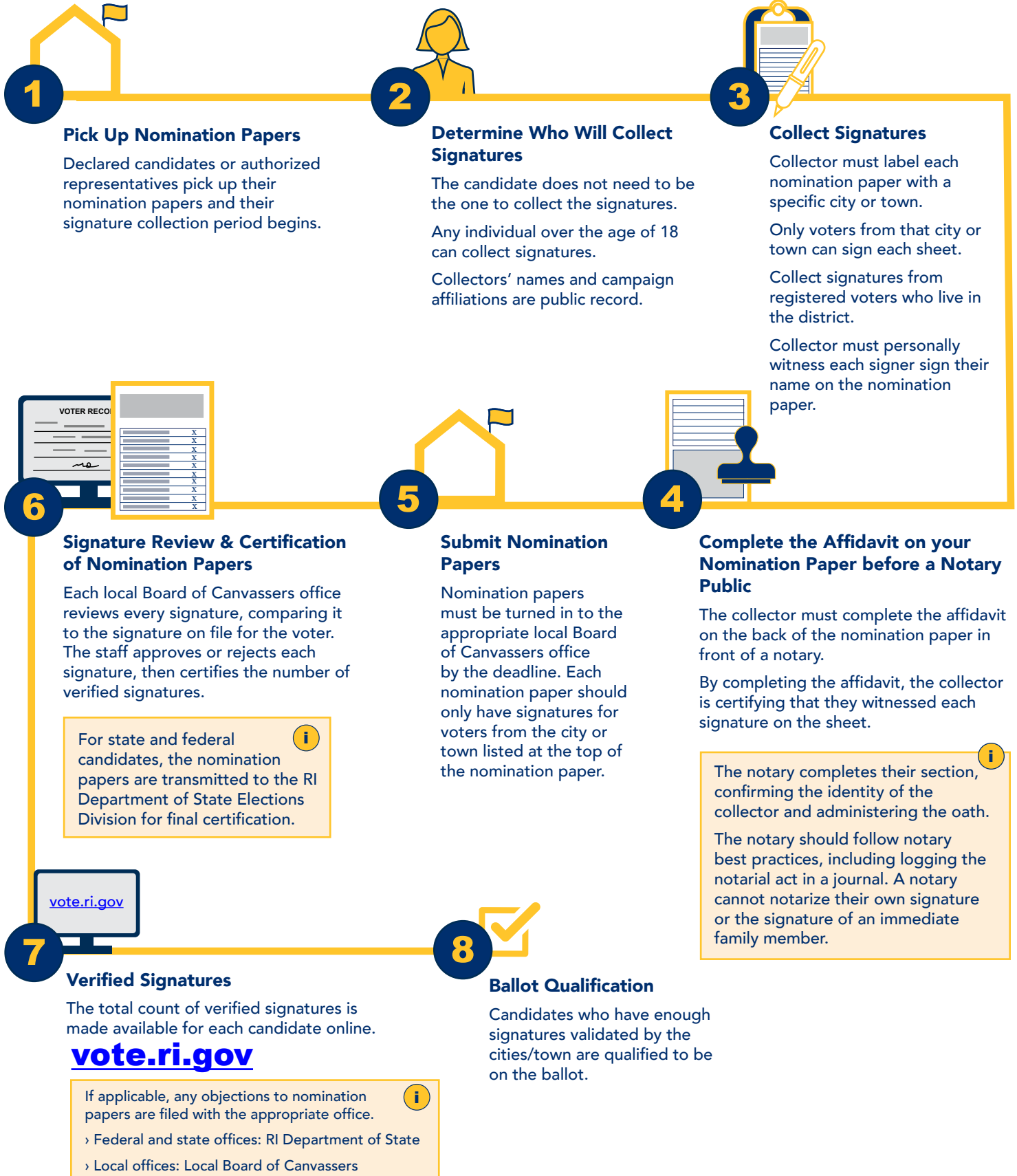
Affidavit of Signatures Obtained
Name, signature, and oath of the person that collected the signatures on the nomination paper. By completing the affidavit in the presence of the notary public, the collector is certifying that they witnessed each signature on the sheet.

Notary Public
The notary completes their section, confirming the identity of the collector and administering the oath. The notary should follow notary best practices, including logging the notarial act in a journal. A notary cannot notarize their own signature or the signature of an immediate family member.

Board of Canvassers Certification
The Board of Canvassers for that city/town certifies the number of valid signatures on the form.

BOC Disposition Codes: A = Accepted B = Blank line D = Duplicate N = Not registered/found NE = Not eligible S = Signature does not match WD= Wrong District

Nomination Paper Process



Withdrawal of Candidacy

If I file a Declaration of Candidacy, can I decide not to run?

Yes, but you must file a withdrawal of candidacy.

When and where do I file a withdrawal of candidacy?

If you filed as a:	File a withdrawal by:	File a withdrawal with:
Party or independent/unaffiliated candidate for local office	Not later than July 13	Local Board of Canvassers where you filed your Declaration of Candidacy
Party nominee or independent/unaffiliated candidate for federal, statewide, or state office	Not later than July 17	Department of State Elections Division

Can I withdraw if I am the party's nominee for the office that I am seeking?

Yes. If you are the party's nominee for the office that you are seeking (i.e. you are the candidate that will appear on the November ballot for your party) you can withdraw.

Keep in mind that you have to withdraw by **September 11** in order for the party to name another candidate to fill the vacancy.

Ballot Placement - Primary Election

Will there be a primary for the office that I am seeking?

A primary is necessary when two or more candidates from the same political party qualify for ballot placement for the same office.

There will be no primary for the office you seek if:

- No one else filed a valid Declaration of Candidacy as a party candidate from the same party for the same office that you are seeking;
- No one else from the same political party filed timely nomination papers containing the requisite number of signatures for the same office that you are seeking; or
- The other candidate(s) from the same political party who qualified for the same office withdrew according to State law.

In elections where the voter casts a vote for more than one candidate for an office, there is no primary election when the number of candidates qualified for ballot placement equals or is less than the number to be elected. In this case, your name will automatically appear on the November ballot.

Example: In a town council race where the voters are allowed to vote for any five candidates, there is no primary when the number of candidates from the same political party qualified for ballot placement is five or less.

If I run as a candidate for public office, when will my name appear on the primary ballot?

Names of federal, statewide, state, and local candidates for public office where there is a primary appear on the **September 9** primary ballot.

If you are an unopposed party candidate for federal, statewide, or state public office, but there are other contested primaries in the precincts in your ward or district, your name will also appear on the primary ballot. However, you are automatically the nominee of your party for said public office and your name will also appear on the November ballot.

Names of unopposed party candidates for local office do not appear on the primary ballot.

If I run as a candidate for a party office, when will my name appear on the primary ballot?

Party offices (for example: senatorial and representative district committees) are elected at the primary election on **September 9**.

In elections where the voter casts a vote for more than one candidate for an office, there is no election when the number of candidates qualified for ballot placement equals or is less than the number to be elected. In this case, party office candidates are automatically elected to the positions and their names do not appear on a ballot.

Example: In a representative district committee race where voters are allowed to select three candidates, there is no election when the number of candidates qualified for ballot placement is three or less.

How will my name appear on the primary ballot?

Your name will be printed on the ballot as it appears on the voting list. On the Declaration of Candidacy form, there is a section at the bottom for you to clearly print how your name should appear. You should include any capitalization, punctuation, spaces, and suffix in the spelling of your name. You also have the option to abbreviate or omit your middle name.

How is my ballot placement determined if I am a candidate in a primary?

The endorsed candidate for each federal, statewide, state, and local office will appear first directly under the title of office that is being sought and will have an asterisk (*) next to their name. For local offices where there is more than one endorsed candidate, the names of the endorsed candidates shall be listed in the order in which they were certified to the Department of State Elections Division by the local Board of Canvassers.

The unendorsed candidate(s) for federal, statewide, and state offices will follow on the ballot. If there is more than one unendorsed candidate, they will be listed on the ballot in the order chosen by a lottery conducted by the Department of State Elections Division.

The unendorsed candidate(s) for local offices will be listed in alphabetical order following the name or names of the endorsed candidate(s).

When are the lotteries conducted for ballot placement for the primary?

The Department of State Elections Division will conduct a lottery on **July 17 at 5 p.m.** at 148 W. River St., Providence, RI to determine ballot placement for unendorsed federal, statewide, and state party candidates for primary ballots.

Ballot Placement - General Election

How will my name appear on the general election ballot?

Your name will be printed on the ballot as it appears on the voting list. On the Declaration of Candidacy form, there is a section at the bottom for you to clearly print how your name should appear. You should include any capitalization, punctuation, spaces, and suffix in the spelling of your name. You also have the option to abbreviate or omit your middle name.

Party candidates will be listed on the ballot along with the name of their political party. Independent/unaffiliated candidates will be listed on the ballot along with the name of their “political principle, movement, or organization” in small print or the word “Independent” when no “political principle, movement, or organization” is listed on the candidate’s Declaration of Candidacy.

How is my ballot placement determined if I am a candidate in the general election?

The order in which the political parties appear on the general election ballot is determined by a lottery conducted by the Department of State Elections Division. The order in which federal, statewide, and state independent/unaffiliated candidates appear on the ballot beneath the party candidates is also determined by a lottery conducted by the Department of State Elections Division. For local public offices, the city/town selects the method of ballot placement.

When are the lotteries conducted for ballot placement for the general election?

The Department of State Elections Division will conduct a lottery on **July 17 at 5 p.m.** at 148 W. River St., Providence, RI to determine ballot placement of party candidates and federal, statewide, and state independent/unaffiliated candidates for the general election ballots.

Election Day Activities

The State Board of Elections has oversight of the conduct of elections at polling places.

Are there any restrictions on activities at the polling places on Election Day?

RI General Laws [§17-19-49](#) restricts the display or distribution of any poster, paper, circular, or document that would aid, injure, or defeat any candidate for public office or any political party or any question on the ballot.

This law prohibits such display within the voting place or within fifty (50) feet of the entrance or entrances to the building in which voting is taking place at any primary or election.

Election officials - that is, wardens, moderators, clerks, and bi-partisan supervisors - assigned to a polling place are also prohibited from displaying or wearing any political party button, badge, or other device that is intended to aid, injure, or defeat the candidacy of any person for public office or any question on the ballot or to intimidate or influence any voter.



If you have any questions as to what campaigning is allowed, contact the State Board of Elections at 401-222-2345.

Campaign Finance

Statewide, state, and local candidates for public office

For statewide, state, and local candidates, RI General Law 17-25, entitled “Rhode Island Campaign Contributions and Expenditures Reporting,” governs campaign finance.

The Campaign Finance Division of the State Board of Elections administers State campaign finance laws. The State Board of Elections also promulgates rules and regulations regarding campaign finance.

The Campaign Finance Division provides information relative to campaign finance reporting requirements, as well as information on contribution and expenditure limits and restrictions relative to financing a campaign.

The Campaign Finance Division will also provide information regarding public financing of election campaigns of candidates for statewide general offices.

For further information regarding campaign finance, contact:

State Board of Elections

2000 Plainfield Pike

Cranston, RI 02921

Phone: 401-222-2345

Fax: 401-222-4424

Email: campaign.finance@elections.ri.gov

Website: elections.ri.gov

Federal candidates for public office

Federal candidates running for office in Rhode Island should contact the Federal Election Commission for campaign finance requirements.

Federal Election Commission

Phone: 1-800-424-9530

Website: www.fec.gov

2026 Campaign Finance Calendar

Any candidate for public office, as defined in RI General Law §[17-25-3](#), is required to file a Notice of Organization with the State Board of Elections prior to receiving any contributions or expending any money in the furtherance or aid of their candidacy or at the time of filing their Declaration of Candidacy, whichever occurs first. Any candidate who files a Notice of Organization with the State Board of Elections prior to the declaration period (June 22, 23, and 24, 2026) must file quarterly on-going reports for all reporting periods occurring prior to the declaration period. (Note: Persons who have a Notice of Organization on file with the State Board of Elections and who regularly file reports with the Board are required to file an amended Notice of Organization whenever there is a change to information therein contained.)

For further information regarding campaign finance requirements, contact:

State Board of Elections

2000 Plainfield Pike
Cranston, RI 02921

Phone: 401-222-2345
Fax: 401-222-4424

Email: campaign.finance@elections.ri.gov
Website: www.elections.ri.gov

DUE DATES

April 30

(For reporting period January 1, 2026 through March 31, 2026)

QUARTERLY ONGOING REPORTS

Reports are due from candidates. [RIGL §[17-25-11](#)]

July 31

(For reporting period April 1, 2026 through June 30, 2026)

QUARTERLY ONGOING REPORTS

Reports are due from candidates*.

* New candidates who file their initial Notice of Organization during the declaration period need not file this report. The first report of contributions received and expenditures incurred shall be due as follows:

- › IF A CANDIDATE IN THE PRIMARY, the report for the period between the date of declaration and August 11, 2026, shall be due on August 12, 2026.
- › IF NOT A CANDIDATE IN THE PRIMARY, the report for the period between the date of declaration and October 5, 2026, shall be due on October 6, 2026. [RIGL §[17-25-11](#)]

August 12

(For reporting period July 1, 2026 through August 11, 2026)

PRE-PRIMARY REPORTS

On-going candidates that are participating in a primary must file reports 28 days prior to the party primaries. [RIGL §[17-25-11\(a\)\(2\)](#)]

September 2

(For reporting period August 12, 2026 through September 1, 2026)

PRE-PRIMARY REPORTS

All candidates that are participating in a primary must file reports seven (7) days prior to the party primaries. [RIGL §[17-25-11\(a\)\(2\)](#)]

October 6

PRE-ELECTION REPORTS

Candidates that are participating in the general election must file reports 28 days prior to the election.

If the candidate:

- › PARTICIPATED IN THE PRIMARY AND WAS SUCCESSFUL, the reporting period is September 2, 2026 through October 5, 2026.
(Unsuccessful primary candidates, see next entry)
- › DID NOT PARTICIPATE IN THE PRIMARY, the reporting period is date of declarations for new candidates and July 1, 2026 for on-going campaigns through October 5, 2026. [RIGL §[17-25-11\(a\)\(2\)](#)]

October 7

(For reporting period September 2, 2026 through October 6, 2026)

POST-PRIMARY REPORTS – UNSUCCESSFUL PRIMARY CANDIDATES

All unsuccessful primary candidates must file reports 28 days after the primary. [RIGL §[17-25-11\(a\)\(3\)](#)]

October 27

(For reporting period October 6, 2026 through October 26, 2026)

PRE-ELECTION REPORTS

Candidates that are participating in the election must file reports seven (7) days prior to the election. [RIGL §[17-25-11\(a\)\(2\)](#)]

November 2

(For reporting period July 1, 2026 through September 30, 2026)

QUARTERLY ONGOING REPORTS

Reports are due from candidates that did not participate in the September primary and are not participating in the November election. [RIGL §[17-25-11](#)]

December 1

(For reporting period October 27, 2026 through November 30, 2026)

POST-ELECTION REPORTS

Candidates that participated in the election must file reports 28 days after the election. [RIGL §[17-25-11\(a\)\(3\)](#)]

February 1, 2027

QUARTERLY ONGOING REPORTS

Reports are due from all candidates:

If the candidate:

- › PARTICIPATED IN THE NOVEMBER 3, 2026 ELECTION, the reporting period is December 1, 2026 through December 31, 2026.
- › WAS UNSUCCESSFUL IN THE PRIMARY, the reporting period is October 7, 2026 through December 31, 2026.
- › DID NOT PARTICIPATE IN A PRIMARY OR ELECTION, the reporting period is October 1, 2026 through December 31, 2026.

Campaign Finance Reporting Schedule

All Candidates Participating in the 2026 Primary and/or General Election

Report	Reporting Period	Report Due Date
Section 1		
Candidates with On-Going Campaigns Participating in the September 9, 2026 Primary*		
On-Going Quarterly (1 st)	01/01/26 - 03/31/26	04/30/26
On-Going Quarterly (2 nd)	04/01/26 - 06/30/26	07/31/26
28 Days Before Primary	07/01/26 - 08/11/26	08/12/26
7 Days Before Primary	08/12/26 - 09/01/26	09/02/26
If you were UNSUCCESSFUL in your primary, please continue to Section 2 If you were SUCCESSFUL in your primary, please continue to Section 3		
Section 2		
UNSUCCESSFUL Primary Candidates Only		
28 Days After Primary	09/02/26 - 10/06/26	10/07/26
On-Going Quarterly (4 th)	10/07/26 - 12/31/26	02/01/27
Section 3		
SUCCESSFUL Primary Candidates Participating in the November 3, 2026 Election		
28 Days Before Election	09/02/26 - 10/05/26	10/06/26
7 Days Before Election	10/06/26 - 10/26/26	10/27/26
28 Days After Election	10/27/26 - 11/30/26	12/01/26
On-Going Quarterly (4 th)	12/01/26 - 12/31/26	02/01/27
Section 4		
Candidates Participating in the November 3, 2026 Election ONLY		
On-Going Quarterly (1 st)	01/01/26 - 03/31/26	04/30/26
On-Going Quarterly (2 nd)	04/01/26 - 06/30/26	07/31/26
28 Days Before Election	07/01/26 - 10/05/26	10/06/26
7 Days Before Election	10/06/26 - 10/26/26	10/27/26
28 Days After Election	10/27/26 - 11/30/26	12/01/26
On-Going Quarterly (4 th)	12/01/26 - 12/31/26	02/01/27

*Persons filing Declarations of Candidacy during the June 22-24, 2026 candidacy declaration period, and who do not have an on-going campaign, the Reporting Period begins on the date the Declaration of Candidacy was filed.

Ethics Commission Filing

All candidates for statewide, state, or local elected office are REQUIRED to file a financial disclosure statement with the Rhode Island Ethics Commission, covering the prior calendar year [RIGL [§36-14-16\(c\)](#)]. This disclosure must be filed within 30 days of filing a Notice of Organization or a Declaration of Candidacy, whichever occurs first. You may request an extension of time to file of no more than 15 days past the deadline, provided that you make the request to the Ethics Commission prior to the original filing deadline.

The Ethics Commission's financial disclosure form for candidates is different than, and in addition to, any campaign or candidate-related filings you may be required to make with the State Board of Elections, the Department of State, or your local Board of Canvassers.

Failure to file this form on time with the Ethics Commission is a violation of the law, and could lead to the imposition of a fine.

The financial disclosure form requires the disclosure of, among other things, sources of income and assets, including those of a spouse and any dependent children. You generally do NOT have to disclose the amount of income you received or the value of your assets, although candidates for statewide office do disclose ranges of income amounts. Candidates must also disclose business interests including those in entities that are regulated by, or do business with, the State of Rhode Island. Additionally, candidates must disclose the name and address of any person, business or organization (other than a credit card company or the holder of your residential mortgage) which is owed more than \$1,000 by the candidate, a spouse, or dependent child.

How to File

Online: Forms may be completed and submitted online at <https://ethics.ri.gov/>. The Ethics Commission strongly recommends online filing because it is simpler and faster than submitting a hard copy, and they will automatically email you a receipt and copy of your completed online form. To file online for the first time you must contact the Ethics Commission to obtain a PIN and I.D.

Hard Copy: If you do not wish to file online, you may obtain a hard copy of the financial disclosure form and file it via regular mail or hand delivery to the Ethics Commission office. To obtain a copy of the form contact the Ethics Commission.

Rhode Island Ethics Commission

40 Fountain Street
Providence, RI 02903
Email: ethics.email@ethics.ri.gov
Website: <https://ethics.ri.gov/>
Phone: 401-222-3790



Any mailing **MUST** be addressed to the attention of “Board of Canvassers”

Local Boards of Canvassers

Contact Information

Barrington Town Hall

283 County Rd. 02806
401-247-1900 x301

Bristol Town Hall

10 Court St. 02809
401-253-7000

Burrillville Town Hall

105 Harrisville Main St.
Harrisville 02830
401-568-4300 x132

Central Falls City Hall

580 Broad St. 02863
401-727-7450

Charlestown Town Hall

4540 South County Trl. 02813
401-364-1200

Coventry Town Hall

1670 Flat River Rd. 02816
401-822-9150

Cranston City Hall

869 Park Ave. 02910
401-780-3121

Cumberland Town Hall

45 Broad St. 02864
401-728-2400 x131

East Greenwich Town Hall

125 Main St.
P.O. Box 111 02818
401-886-8603

East Providence City Hall

145 Taunton Ave. 02914
401-435-7502

Exeter Town Hall

675 Ten Rod Rd. 02822
401-294-2287

Foster Town Hall

181 Howard Hill Rd. 02825
401-392-9201

Glocester Town Hall

1145 Putnam Pike
P.O. Drawer B, Chepachet 02814
401-568-6206 x0

Hopkinton Town Hall

1 Town House Rd. 02833
401-377-7777

Jamestown Town Hall

93 Narragansett Ave. 02835
401-423-9801

Johnston Town Hall

1385 Hartford Ave. 02919
401-553-8856

Lincoln Town Hall

100 Old River Rd.
P.O. Box 100 02865
401-333-1140

Little Compton Town Hall

40 Commons
P.O. Box 226 02837
401-635-4400

Middletown Town Hall

350 East Main Rd. 02842
401-849-5540

Narragansett Town Hall

25 Fifth Ave. 02882
401-782-0625

Newport City Hall

43 Broadway 02840
401-845-5384

New Shoreham Town Hall

16 Old Town Rd.
P.O. Box 220 02807
401-466-3200

North Kingstown Town Hall

100 Fairway Dr. 02852
401-268-1552

North Providence Town Hall

2000 Smith St. 02911
401-232-0900 x1230

North Smithfield Town Hall

83 Greene St. 02896
401-767-2200 x504

Pawtucket City Hall

137 Roosevelt Ave. 02860
401-722-1637

Portsmouth Town Hall

2200 East Main Rd. 02871
401-683-3157

Providence City Hall

25 Dorrance St. Rm. 102 02903
401-680-5525

Richmond Town Hall

5 Richmond Townhouse Rd.
Wyoming 02898
401-539-9000 x9

Scituate Town Hall

195 Danielson Pike
N. Scituate 02857
401-647-7466

Smithfield Town Hall

64 Farnum Pike, 02917
401-233-1000 x111

South Kingstown Town Hall

180 High St.
Wakefield 02879
401-789-9331 x1231

Tiverton Town Hall

343 Highland Rd. 02878
401-625-6703

Warren Town Hall

514 Main St. 02885
401-245-7340 x4

Warwick City Hall

3275 Post Rd. 02886
401-738-2010

West Greenwich Town Hall

280 Victory Hwy. 02817
401-392-3800 x100

West Warwick Town Hall

1170 Main St. 02893
401-822-9201

Westerly Town Hall

45 Broad St. 02891
401-348-2503

Woonsocket City Hall

169 Main St.
P.O. Box B 02895
401-767-9223

State Elections and Political Party Offices

Contact Information

› RI Department of State

Elections Division
148 W. River St., Providence, RI 02904 401-222-2340

› State Board of Elections

2000 Plainfield Pike, Cranston, RI 02921 401-222-2345

› Rhode Island Democratic Party

P.O. Box 6004, Providence, RI 02940 401-563-7145

› Rhode Island Republican Party

1800 Post Rd., Suite 17-I, Warwick, RI 02886 401-732-8282

United States Postal Service (USPS)

The United States Postal Service provides extensive information to assist you with your political campaign mail on its website (www.usps.com/business/political-mail.htm). For mailpiece design assistance, please contact the MDA Customer Service Help Desk at 877-672-0007 option 2 or by email at MDA@usps.gov.

RI Department of State Resources

The following information concerning the 2026 election cycle can be found at vote.ri.gov:

- › Election Calendar - English & Spanish
- › How to Run for Office Guide - English & Spanish
- › Declaration of Candidacy Form
- › Political Party Endorsement Form
- › Qualified Federal, Statewide, and State Candidates: Starting June 22, 2026, daily updates of federal, statewide, and state candidates who filed and/or qualified for ballot placement.
- › Qualified Local Candidates: Starting June 22, 2026, daily updates of local candidates who filed and/or qualified for ballot placement.
- › Sample ballots - Available July 2026 (Primary) and September 2026 (General Election)
- › Polling place lookup
- › Mail Ballot Application and Online Mail Ballot Application
- › Voter Referenda Handbook - Available September 2026 (if applicable)